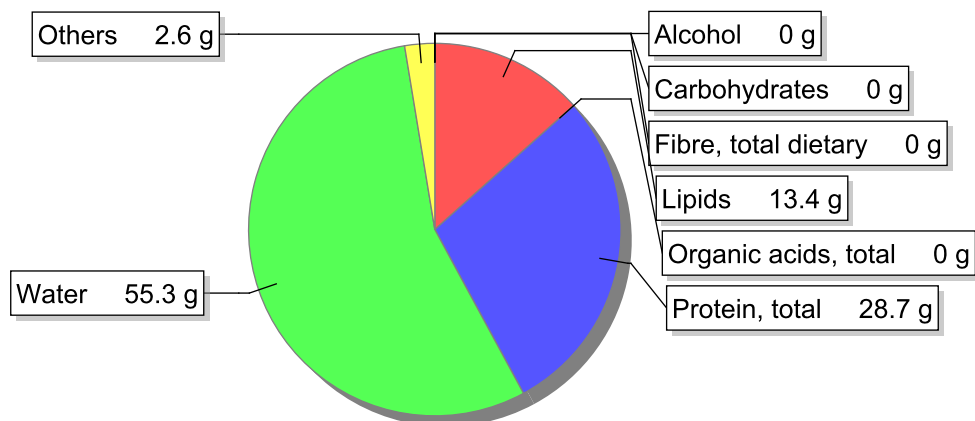


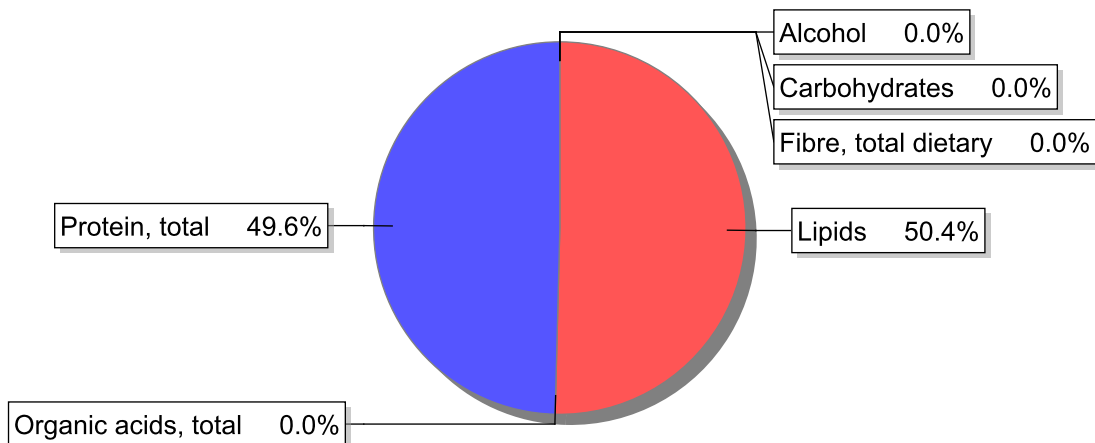
## Food

**Name:** Chicken, wing quarter, meat and skin, grilled  
**Group:** Meat and meat products, fowl and game meat  
**Subgroup:** Fowl and game meat  
**Edible Part:** 43%  
**Code:** IS255  
**FoodEX2 Code:** A01SP

## Composition [g/100g]



## Energy



## Nutritive content per 100g edible portion

Name	Value	Unit	Source(s)
energy kcal, total metabolisable	235	kcal	
energy kJ, total metabolisable	984	kJ	
fatty acids, total saturated	3.2	g	
fatty acids, total monounsaturated	4.4	g	
fatty acids, total polyunsaturated	2.7	g	
fatty acid 18:2 n-6 cis,cis	2.4	g	
fatty acids, total trans	0.1	g	
sugars, total	0	g	
sucrose	0	g	

Name	Value	Unit	Source(s)
lactose	0	g	
oligosaccharides, available	0	g	
fibre, total dietary	0	g	
protein, total	28.7	g	
alcohol	0	g	
water	55.3	g	
organic acids, total	0	g	
cholesterol	108	mg	
vitamin A; retinol equiv from retinol and carotenoid activities	20	µg	
carotene, total (vitamin A precursors)	0	µg	
vitamin D	0.8	µg	
alpha-tocopherol	0.1	mg	
thiamin	0.1	mg	
riboflavin	0.31	mg	
niacin, preformed	9.2	mg	
niacin equivalents, total	15	mg	
niacin equivalents from tryptophan	5.4	mg	
vitamin B-6, total	0.31	mg	
vitamin B-12	0.54	µg	
vitamin C	0	mg	
folate, total	9.2	µg	
ash	1.99	g	
sodium	270	mg	
potassium	400	mg	
calcium	10	mg	
phosphorus	210	mg	
magnesium	27	mg	
iron, total	0.8	mg	
zinc	1.1	mg	

## Legend

Code	Name
g	gram
kJ	kilojoule
kcal	kilocalorie
mg	milligram
µg	microgram

## References

Id	Reference
1138	TDS_Iodo_2016_INSA_LAB