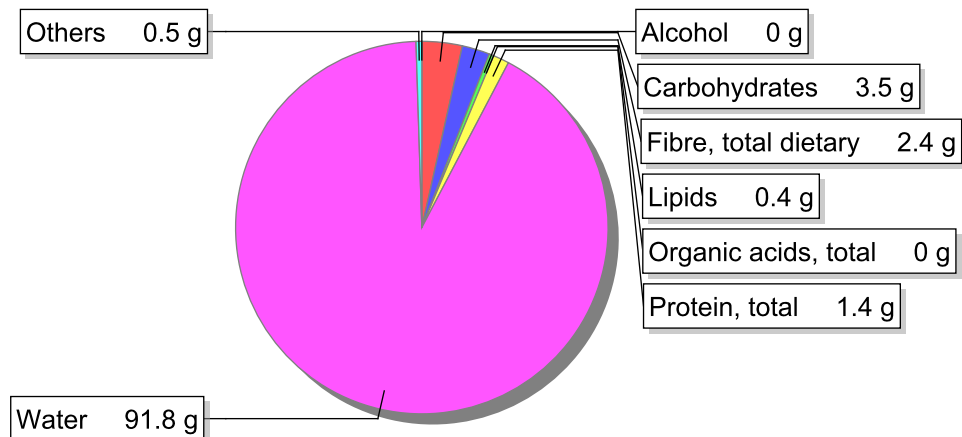


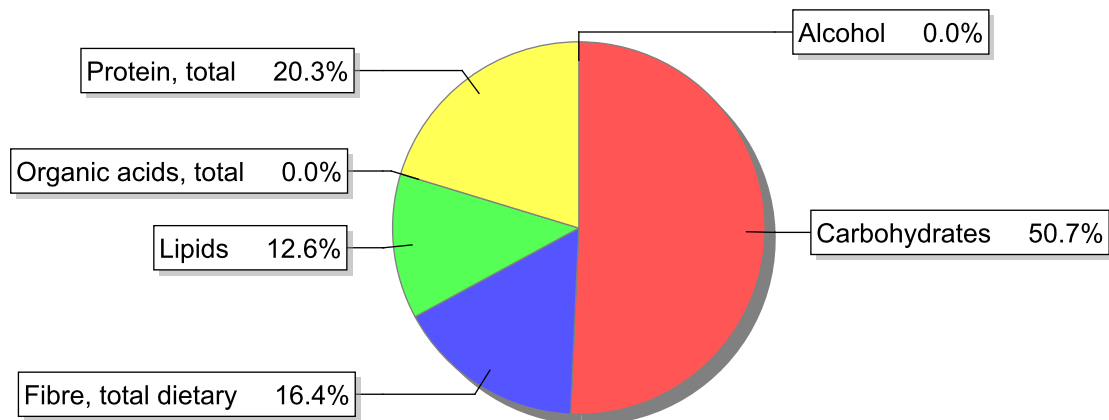
## Food

**Name:** Cabbage, white, raw  
**Group:** Vegetables other than legumes  
**Subgroup:** Vegetables other than legumes  
**Edible Part:** 75%  
**Code:** IS552  
**FoodEX2 Code:** A00GC

## Composition [g/100g]



## Energy



## Nutritive content per 100g edible portion

Name	Value	Unit	Source(s)
energy kcal, total metabolisable	28	kcal	
energy kJ, total metabolisable	117	kJ	
fatty acids, total saturated	0.1	g	57
fatty acids, total monounsaturated	0	g	
fatty acids, total polyunsaturated	0.2	g	57
fatty acid 18:2 n-6 cis,cis	0.1	g	57
fatty acids, total trans	0	g	
sugars, total	3.4	g	
sucrose	0.3	g	

Name	Value	Unit	Source(s)
<b>lactose</b>	0	g	
<b>salt</b>	0.0	g	
<b>starch, total</b>	0.1	g	
<b>protein, total</b>	1.4	g	
<b>alcohol</b>	0	g	
<b>water</b>	91.8	g	
<b>organic acids, total</b>	0	g	
<b>cholesterol</b>	0	mg	
<b>vitamin A; retinol equiv from retinol and carotenoid activities</b>	7	µg	
<b>carotene, total (vitamin A precursors)</b>	40	µg	
<b>vitamin D</b>	0	µg	
<b>alpha-tocopherol</b>	0.2	mg	
<b>thiamin</b>	0.12	mg	
<b>riboflavin</b>	0.01	mg	57
<b>niacin, preformed</b>	0.3	mg	
<b>niacin equivalents, total</b>	0.6	mg	
<b>niacin equivalents from tryptophan</b>	0.3	mg	
<b>vitamin B-6, total</b>	0.18	mg	
<b>vitamin B-12</b>	0	µg	
<b>vitamin C</b>	40	mg	
<b>folate, total</b>	34	µg	
<b>ash</b>	0.50	g	
<b>sodium</b>	7	mg	
<b>potassium</b>	240	mg	
<b>calcium</b>	50	mg	
<b>phosphorus</b>	38	mg	57
<b>magnesium</b>	6	mg	
<b>iron, total</b>	0.6	mg	57
<b>zinc</b>	0.2	mg	57

## Legend

Code	Name
g	gram
kJ	kilojoule
kcal	kilocalorie
mg	milligram
µg	microgram

## References

Id	Reference
57	PIABAD (1993) Programa do Instituto de Alimentação Becel para análise de dietas: programa profissional para computadores pessoais. Lisboa: IAB