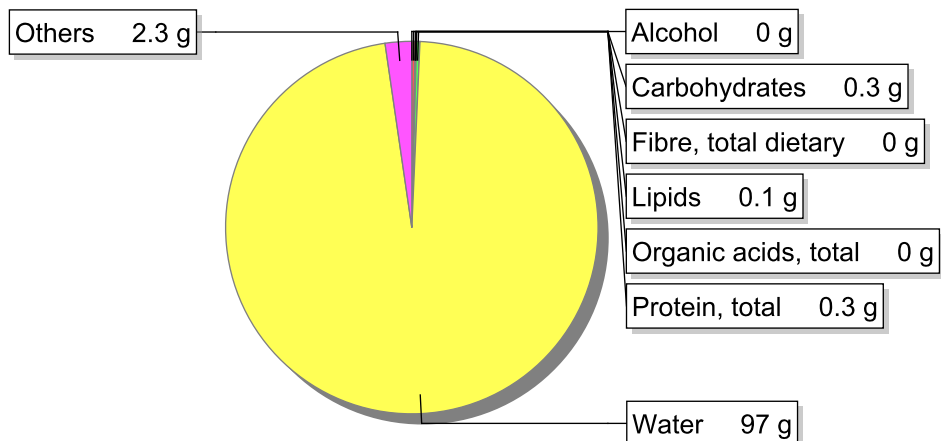


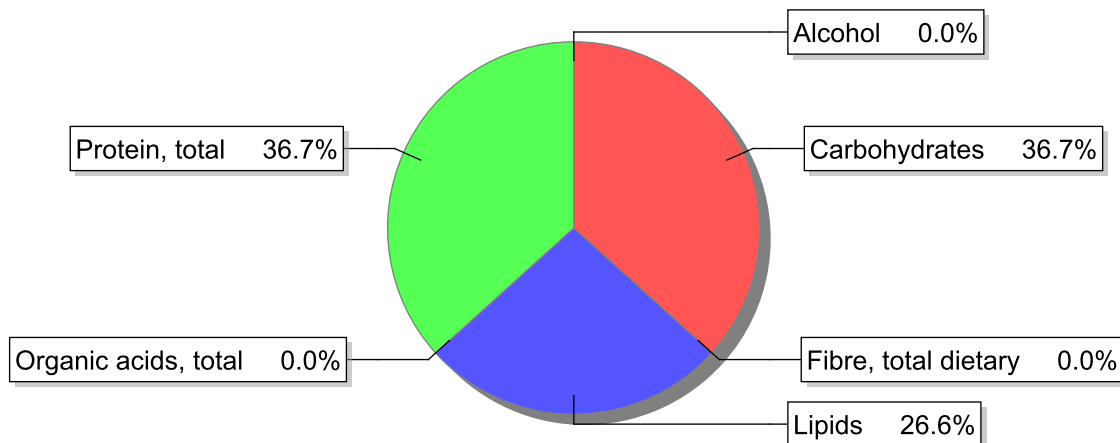
**Food**

**Name:** Coffee, infusion, average ("bica" 60%, coffee made in coffeepot 40%)  
**Group:** Drinks  
**Subgroup:** Non-alcoholic beverages  
**Edible Part:** 100%  
**Code:** IS770  
**FoodEX2 Code:** A03KC

**Composition [g/100g]**



**Energy**



**Nutritive content per 100g edible portion**

Name	Value	Unit	Source(s)
<b>Energy value</b>			
energy kcal, total metabolisable	3	kcal	
energy kJ, total metabolisable	14	kJ	
<b>Macro nutrients</b>			
Lipids		g	
fatty acids, total saturated	0	g	
fatty acids, total monounsaturated	0	g	
fatty acids, total polyunsaturated	0.1	g	
fatty acid 18:2 n-6 cis,cis	0	g	

Name	Value	Unit	Source(s)
fatty acids, total trans	0	g	
Carbohydrates		g	
sugars, total	0	g	
sucrose	0	g	
lactose	0	g	
oligosaccharides, available	0	g	
starch, total	0.3	g	
salt	0.0	g	
fibre, total dietary	0	g	
protein, total	0.3	g	
alcohol	0	g	
water	97	g	
organic acids, total	0	g	
cholesterol	0	mg	
<b>Vitamins</b>			
vitamin A; retinol equiv from retinol and carotenoid activities	0	µg	
carotene, total (vitamin A precursors)	0	µg	
vitamin D	0	µg	
alpha-tocopherol	0	mg	
thiamin	0	mg	
riboflavin	0	mg	
niacin, preformed	0.7	mg	
niacin equivalents, total	0.7	mg	
niacin equivalents from tryptophan	0	mg	
vitamin B-6, total	0	mg	
vitamin B-12	0	µg	
vitamin C	0	mg	
folate, total	0	µg	
<b>Minerals</b>			
ash	0.43	g	
sodium	2	mg	
potassium	220	mg	
calcium	3	mg	
phosphorus	11	mg	
magnesium	8	mg	
iron, total	0	mg	
zinc	0	mg	

## Legend

Code	Name
g	gram
kJ	kilojoule
kcal	kilocalorie
mg	milligram
µg	microgram

---

## References