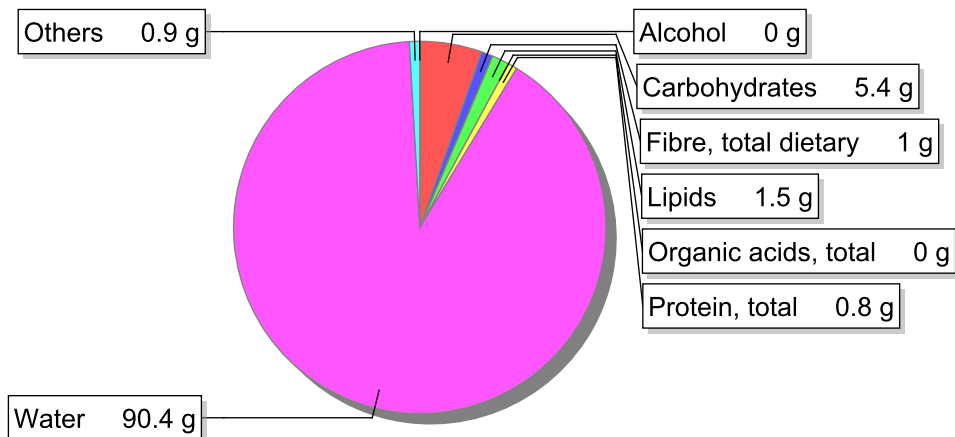


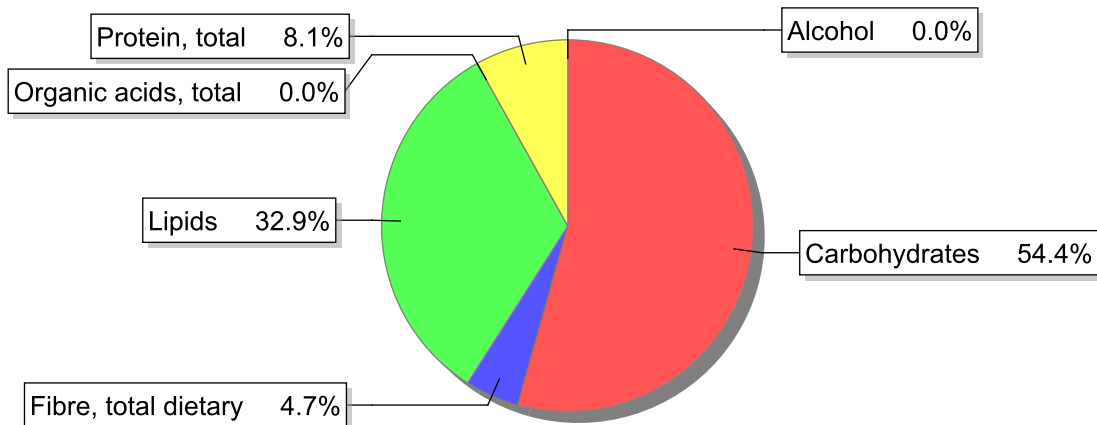
**Food**

**Name:** Soup, white cabbage  
**Group:** Soups, sauces and miscellaneous foods  
**Subgroup:** Soups  
**Edible Part:** 100%  
**Code:** IS785  
**FoodEX2 Code:** A0BZ9

**Composition [g/100g]**



**Energy**



**Nutritive content per 100g edible portion**

Name	Value	Unit	Source(s)
energy kcal, total metabolisable	40	kcal	
energy kJ, total metabolisable	169	kJ	
fatty acids, total saturated	0.2	g	
fatty acids, total monounsaturated	1.1	g	
fatty acids, total polyunsaturated	0.1	g	
fatty acid 18:2 n-6 cis,cis	0.1	g	
fatty acids, total trans	0	g	
sugars, total	1.3	g	
sucrose	0.4	g	

Name	Value	Unit	Source(s)
<b>lactose</b>	0	g	
<b>oligosaccharides, available</b>	0.0	g	
<b>fibre, total dietary</b>	1	g	
<b>protein, total</b>	0.8	g	
<b>alcohol</b>	0	g	
<b>water</b>	90.4	g	
<b>organic acids, total</b>	0	g	
<b>cholesterol</b>	0	mg	
<b>vitamin A; retinol equiv from retinol and carotenoid activities</b>	134	µg	
<b>carotene, total (vitamin A precursors)</b>	805	µg	
<b>vitamin D</b>	0	µg	
<b>alpha-tocopherol</b>	0.31	mg	
<b>thiamin</b>	0.05	mg	
<b>riboflavin</b>	0.01	mg	
<b>niacin, preformed</b>	0.36	mg	
<b>niacin equivalents, total</b>	0.67	mg	
<b>niacin equivalents from tryptophan</b>	0.19	mg	
<b>vitamin B-6, total</b>	0.1	mg	
<b>vitamin B-12</b>	0	µg	
<b>vitamin C</b>	5	mg	
<b>folate, total</b>	9.5	µg	
<b>ash</b>	0.916	g	
<b>sodium</b>	240	mg	
<b>potassium</b>	130	mg	
<b>calcium</b>	15	mg	
<b>phosphorus</b>	17	mg	
<b>magnesium</b>	6	mg	
<b>iron, total</b>	0.2	mg	
<b>zinc</b>	0.1	mg	

## Legend

Code	Name
g	gram
kJ	kilojoule
kcal	kilocalorie
mg	milligram
µg	microgram

## References